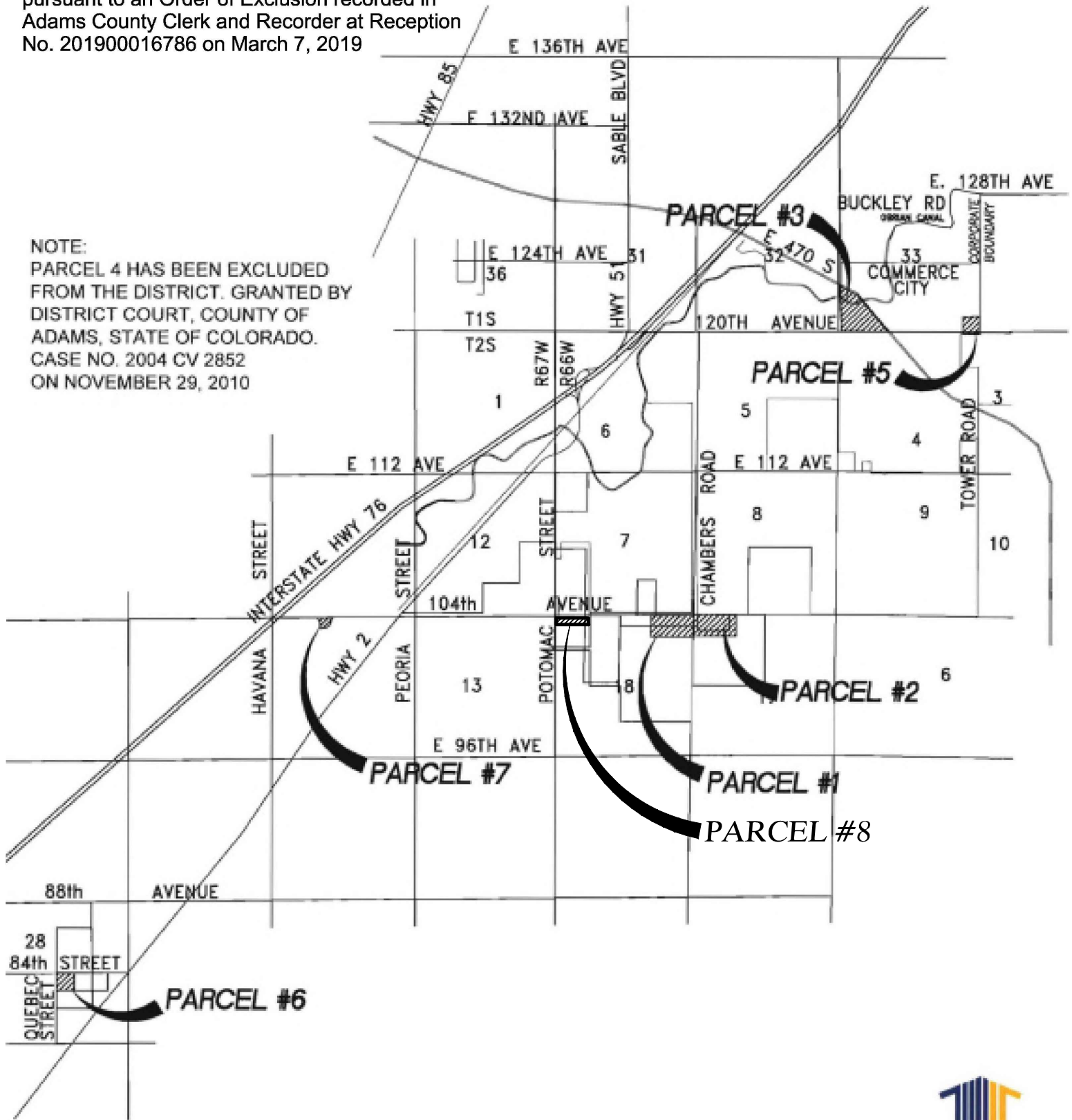


Lot 10, Aspen Hills Commercial Filing No. 2 in Parcel 1 has been excluded from the District, pursuant to an Order of Exclusion recorded in Adams County Clerk and Recorder at Reception No. 201900016786 on March 7, 2019

NOTE:
 PARCEL 4 HAS BEEN EXCLUDED FROM THE DISTRICT. GRANTED BY DISTRICT COURT, COUNTY OF ADAMS, STATE OF COLORADO. CASE NO. 2004 CV 2852 ON NOVEMBER 29, 2010



**OVERALL NORTHERN COMMERCE
 METROPOLITAN DISTRICT
 VICINITY MAP**